



esse

REWILD YOUR SKIN



**MICROBIOME  
SKINCARE**



You wear the microbes on your skin like living armour. They protect you from invading pathogens and boost your skin's barrier function.

Esse researches rewilding techniques to restore your skin's microbiome with probiotics and green chemistry.



YOUR SKIN  
IS AN  
ECOSYSTEM

We use organic biotechnology to create an environment on skin that allows your natural microbial biodiversity to return.

Probiotics and prebiotics in organic formulations help to restore the balance.

Rewild your skin.



Microbe:

**Lactobacillus**

Product:

**Probiotic Serum**



# REWILDING

A healthy microbiome is the natural way to keep skin looking younger. Rewilding is the science of returning your skin's microbiome to its balanced and “wild” state through green chemistry.

By creating the environment for your skin's natural microbes to flourish, we can help restore its ecology.

Restore the balance and let your skin thrive.

# CERTIFIED ORGANIC

Since our inception in 2002, we have remained true to our core principles: we're certified organic, vegan and cruelty free. We support fair trade and we're a carbon and plastic neutral company.

We believe that mindful products are a step towards an indefinitely sustainable and beautiful future.



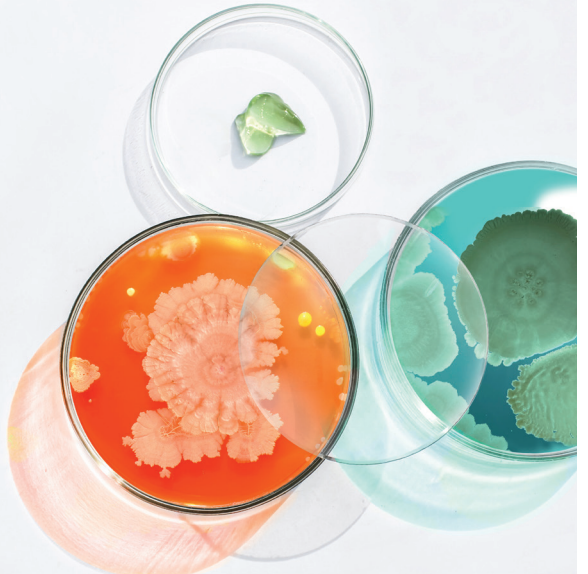




LOVE YOUR  
MICROBIOME

Your microbiome helps skin produce Hyaluronic Acid and other moisturising factors, modulate barrier function and immune response.

It maintains the skin's pH and helps produce calm, healthy skin that not only looks better but ages slower.



# ESSE PLUS



## Premium Anti-Ageing Probiotics

The Esse™ Plus range is our premium probiotic offering. We've spared no expense to deliver the world's most advanced probiotic anti-ageing products.

The highlight of the range is the Probiotic Serum which uses live probiotics to actively shape the skin's ecosystem and contains 1 million live probiotics per drop. This is a world first in skincare.

All of the products in this range boast high-level probiotics and revolutionary anti-ageing skincare actives for visible results.

**R<sup>8</sup>**

### Eye Contour Cream\*

ALL SKINS

Albizia extract boosts collagen and elastin production, visibly improving crow's feet while Belides extract reduces dark rings and Darutoside calms puffiness.



**M<sup>9</sup>**

### Defence Moisturiser\*

ALL SKINS

Gives protection from pollutants and free radicals in a nourishing but light formulation. Prebiotics and probiotic extracts improve barrier function to firm and plump the skin.



**M<sup>10</sup>**

### Restorative Moisturiser\*

ALL SKINS

This intensely moisturising formulation is targeted at repair and restoration. Hyaluronic Acid with prebiotics and probiotic extracts boost moisturisation and slow ageing.



**R<sup>10</sup>**

### Probiotic Serum\*\*

ALL SKINS

The world's first live probiotic serum. It contains more than 1 billion live probiotics per ml to improve barrier function and rectify skin imbalances for a firmer, fuller, more resilient skin.



**R<sup>11</sup>**

### Ageless Serum

ALL SKINS

The firming and lifting effects of this serum are noticeable in 28 days. It contains a range of probiotic and plant extracts that improve skin structure and reduce pigmentation.

**R<sup>9</sup>**

### Intensity Serum\*

ALL SKINS

Rapidly softens wrinkles by relaxing facial muscles. First effects are seen after 2 hours and there is a cumulative effect if used every morning.



# ESSE SENSITIVE



## Probiotics for Reactive Skins

Esse™ Sensitive products combine advanced probiotic (BIOME+) technology and gentle organic ingredients to restore barrier function so that your skin is no longer sensitised.

This range minimises the chances of an allergic response by educating the skin to be less reactive. As your skin normalises, you will be able to incorporate other Esse™ ranges to address ageing concerns.



### Sensitive Cleanser\*

ALL SENSITIVE SKINS

Minimises irritation to sensitive skin while still removing makeup effectively.



### Sensitive Mist\*\*

ALL SENSITIVE SKINS

Probiotic extracts and prebiotic nutrients support a state of equilibrium in the skin's microbiome and improve hydration.



### Hydro Moisturiser\*

OILY OR NORMAL SENSITIVE SKIN

Settles sensitive skin by optimising the health of your skin's microbiome.



### Nourish Moisturiser\*

DRY SENSITIVE SKIN

Boosts barrier function and moisturisation in dry, sensitive skin.



### Sensitive Serum

ALL SENSITIVE SKINS

Live probiotics equip the skin to rectify imbalances and strengthen barrier function.



### Resurrect Serum

ALL SENSITIVE SKINS

A hydrating and plumping serum for sensitive skins needing to address the signs of ageing without initiating an immune function response.



### Sensitive Eye Cream\*\*

ALL SENSITIVE SKINS

Gentle and hydrating ingredients nourish the sensitive skin around the eyes.



### Protect Oil

ALL SENSITIVE SKINS

Shields sensitive skin, offering it all round protection from environmental stresses.

# ESSE CORE





## Our everyday probiotic products

Esse's Core offering includes revolutionary probiotic technology.

The formulations feature prebiotics and probiotic extracts to selectively feed good microbes on your skin.

A balanced skin microbiome will improve barrier function, locking in moisture and keeping toxins out. This reduces subclinical inflammation and slows ageing significantly.

### CLEANSERS



#### Cream Cleanser\*

ALL SKINS

Gently and effectively removes oil-based impurities and makeup.



#### Gel Cleanser\*

ALL SKINS

A foaming, tingling wash that deep cleans without drying.



#### Refining Cleanser\*

ALL SKINS

A lightly foaming clay wash that exfoliates while detoxifying.



#### Make-up Remover\*

ALL SKINS

This ultra-light emulsion dissolves eye make-up without irritation.



### TONERS



#### Hydrating Mist\*\*

ALL SKINS

An anti-oxidant toner to revitalise, protect, and improve skin texture.



#### Biome Mist\*\*

ALL SKINS

Probiotic extracts improve barrier function and educate the skin's immune system.



RANGE CONTINUED OVERLEAF >

## MOISTURISERS

M<sup>5</sup>

### Light Moisturiser\*

YOUNG OR OILY SKIN / HUMID WEATHER CONDITIONS

A light, mattifying moisturiser that includes prebiotics to optimise your skin's microbiome.



M<sup>6</sup>

### Deep Moisturiser\*

NORMAL OR COMBINATION SKIN

Moisturises and maintains balance with Esse's new Biome+ technology.



M<sup>7</sup>

### Rich Moisturiser\*

DRY SKIN / DRY WEATHER CONDITIONS\*

A rich, luxurious moisturiser with probiotic extracts to optimise your skin's microbiome.



M<sup>8</sup>

### Ultra Moisturiser\*

VERY DRY SKIN / VERY DRY WEATHER CONDITIONS

This super-rich treatment with Biome+ technology will satisfy the most thirsty of skins.



## OMEGA MOISTURISERS

O<sup>5</sup>

### Omega Light Moisturiser

YOUNG OR OILY SKIN

Enriched with essential fatty acids and anti-oxidants, offering young or oily skins the benefits of active ingredients without adding oiliness.

O<sup>6</sup>

### Omega Deep Moisturiser

NORMAL OR COMBINATION SKIN

A vitamin enriched anti-oxidant treatment with omega oils for increased hydration. Leaves the skin radiant and well balanced.

O<sup>7</sup>

### Omega Rich Moisturiser

DRY SKIN

A rich moisturiser that delivers high levels of omega-3's while protecting against external pollutants.

## TREATMENTS

R<sup>6</sup>

### Hyaluronic Serum\*\*

ALL SKINS / SIGNS OF AGEING

Hyaluronic Acid promotes rapid moisturisation and prebiotics help to optimise the skin's microbiome.



R<sup>5</sup>

### Eye & Lip Cream\*

ALL SKINS / SIGNS OF AGEING

A treatment packed with actives to hydrate and smooth delicate skin.



R<sup>7</sup>

### Repair Oil\*

ALL SKINS / EXTRA NIGHT CARE / SCAR TISSUE REPAIR

An intensely nourishing oil that supplies an ideal blend of omega fatty acids and vitamin E.



## EXFOLIATORS

E<sup>5</sup>

### Cocoa Exfoliator\*

ALL SKINS

A delectable exfoliation experience to leave your skin moist and smooth.



E<sup>6</sup>

### Microderm Exfoliator\*

MATURE SKIN / SENSITIVE SKIN

A gentle exfoliator with micro-particles to polish and refine the skin's surface.



## MASKS

K<sup>5</sup>

### Clay Mask\*

ALL SKINS / DETOX / ACNE

Kaolin and Bentonite clays draw out impurities and toxins associated with environmental and dietary pollution.



K<sup>6</sup>

### Cream Mask

MATURE SKIN / DRY SKIN

Contains high levels of multiple vitamins to improve skin structure and reduce pigmentation.

## BODY

B<sup>8</sup>

### Rich Body Moisturiser\*

ALL SKINS / DRY WEATHER CONDITIONS

An ideal treatment for dry or dehydrated skin.



B<sup>9</sup>

### Body Oil\*

ALL SKINS / STRETCH MARKS

With an oil profile similar to the skin's natural sebum, this super-light oil is real food for skin.



B<sup>7</sup>

### Hand Cream\*

ALL SKINS / ALL SEASONS / SIGNS OF AGEING

Contains Marula Oil to nourish your hands without leaving a greasy residue.



B<sup>6</sup>

### Lip Conditioner\*

ALL SKINS

Protects and locks in moisture, rapidly repairing dry and chapped lips.



## SUNSCREEN & FOUNDATIONS

S<sup>1</sup>

### Sunscreen SPF 30\*\*

ALL SKINS

A biodegradable, coral-friendly sunscreen that offers broad-spectrum UV protection.



F

### Foundation - 10 Shades\*\*

ALL SKINS / SPF 30

Prebiotic and probiotic supplementation complements your Esse skincare routine.



# ESSE CLARIFYING



## Biotechnology for problem skin

More than 80% of teens and around 4% of adults get acne. This condition is either absent or very rare in people that live traditional rural lifestyles.

The Clarifying Range offers an alternative approach to this inflammatory skin condition by combining more conventional active ingredients, like Salicylic Acid, with microbiome technology to re-establish a healthy balance.

The products minimise disruption of the skin barrier resulting in a reduction of the inflammatory load on skin. Targeted ingredients are included to absorb impurities, regulate sebum production, reduce bacterial overgrowth and calm inflamed skin.



### Clarifying Cleanser\*\*

ALL SKINS

Apply evenly to your face and massage gently to loosen make-up. Wipe off with a cotton pad or cloth. Rinse with cold or lukewarm water.



### Clarifying Serum

ALL SKINS

Apply 2 to 3 pumps evenly over the Clarifying Oil. Apply morning and evening.



### Clarifying Oil

ALL SKINS

Apply 1 to 2 pumps to facial area before using Clarifying Serum to enhance the penetration of the oil. Tailor the amount of oil to suit your skin condition. Apply morning and evening.



### Clarifying Spot Corrector

ALL SKINS

Apply sparingly and directly to problem areas. Apply morning and evening after Clarifying Oil and Serum.



\*Natural and Organic Cosmetic certified by ECOCERT Greenlife according to ECOCERT Standard available at <http://cosmetics.ecocert.com>

\*\*COSMOS ORGANIC certified by Ecocert Greenlife according to COSMOS standard available at <http://COSMOS.ecocert.com>



ESSE

The image is a composite. On the left, a white tube of 'Esse Professional' product is shown, with the brand name 'ESSE' in a stylized font and 'PROFESSIONAL' on a black band. On the right, a petri dish with a blue agar medium shows a large, circular, white bacterial colony with a ruffled, feather-like edge. The text 'ESSE PROFESSIONAL' is overlaid in white on the right side of the image.

PROFESSIONAL

ESSE PROFESSIONAL

An extensive range of bespoke professional products for in-clinic use, as well as specific treatment protocols, available for professionals.

Visit [www.esseskincare.com](http://www.esseskincare.com) to become an Esse stockist.



## PROFESSIONAL CLEANSERS

C<sup>7</sup>

### Make-up Remover

ALL SKINS

This ultra-light emulsion dissolves make-up without irritation.

200ml/6. fl oz salon tube

C<sup>1</sup>

### Sensitive Cleanser

ALL SENSITIVE SKINS

Minimises irritation to sensitive skin while still removing make-up effectively.

400ml/13.5fl oz salon pump

C<sup>5</sup>

### Gel Cleanser

ALL SKINS

A foaming, tingling wash that deep cleans without drying.

400ml/13.5fl oz salon pump

C<sup>8</sup>

### Cream Cleanser

ALL SKINS

Gently and effectively removes oil-based impurities and make-up.

400ml/13.5fl oz salon pump

C<sup>6</sup>

### Refining Cleanser

ALL SKINS

A lightly foaming clay wash that exfoliates while detoxifying.

200ml/6. fl oz salon tube

## PROFESSIONAL TONERS

T<sup>5</sup>

### Toner

ALL SKINS

An anti-oxidant toner to revitalise, protect, and improve skin texture.

250ml/8.4fl oz salon spritz

T<sup>6</sup>

### Toner Plus

ALL SKINS

Probiotic extracts improve barrier function and educate the skin's immune system.

250ml/8.4fl oz salon spritz

T<sup>1</sup>

### Sensitive Toner

ALL SENSITIVE SKINS

Probiotic extracts and prebiotic nutrients support a state of equilibrium in the skin's microbiome and improve hydration.

250ml/8.4fl oz salon spritz

## PROFESSIONAL MOISTURISERS

M<sup>1</sup>

### Hydro Moisturiser

OILY OR NORMAL SENSITIVE SKIN

Settles sensitive skin by optimising the health of your skin's microbiome.

100ml/3.4fl oz salon tube

M<sup>2</sup>

### Nourish Moisturiser

DRY SENSITIVE SKIN

Boosts barrier function and moisturisation in dry, sensitive skin.

100ml/3.4fl oz salon tube

## PROFESSIONAL EXFOLIATORS

E<sup>5</sup>

### Cocoa Exfoliator

ALL SKINS

A delectable exfoliation experience to leave your skin moist and smooth.

200ml/6. fl oz salon tube

E<sup>6</sup>

### Microderm Exfoliator

MATURE SKIN / SENSITIVE SKIN

A gentle exfoliator with micro-particles to polish and refine the skin's surface.

200ml/6. fl oz salon tube

E<sup>11</sup>

### Beta-Hydroxy Exfoliator

AGEING SKINS

An exfoliator for all skins that gently dissolves the cement that binds skin cells together. It is seen as a light peel for getting skin on track.

100ml/3.4fl oz salon tube

E<sup>10</sup>

### Enzyme Exfoliator

OILY SKINS

A professional strength enzymatic and physical exfoliation. Ideal for congested, thickened, and dull skins.

200ml/6. fl oz salon tube



## PROFESSIONAL GALVANIC GELS

G<sup>10</sup>

### Sensitive Galvanic Gel

200ml/6. fl oz salon tube

SENSITIVE SKINS

A conductive gel to reinforce defence and self-restoring properties in all sensitive skins while calming redness.

## PROFESSIONAL MASSAGE MEDIUMS

F<sup>10</sup>

### Facial Massage Cream

200ml/6. Fl oz salon tube

ALL SKINS

A nourishing and protective massage cream to stimulate and repair the epidermis, protecting against free radicals whilst offering long-lasting slip.

## PROFESSIONAL MASKS

K<sup>5</sup>

### Clay Mask

200ml/6. Fl oz salon tube

ALL SKINS / DETOX / ACNE

Kaolin and Bentonite clays draw out impurities and toxins associated with environmental and dietary pollution.

K<sup>6</sup>

### Cream Mask

200ml/6. Fl oz salon tube

MATURE SKIN / DRY SKIN

Contains high levels of multiple vitamins to improve skin structure and reduce pigmentation.

K<sup>11</sup>

### Eye Contour Mask

100ml/3.4 fl oz tube

AGEING SKINS

Intensely active, advanced eye treatment that makes up part of the Esse PLUS professional line.

K<sup>13</sup>

### Intensity Mask

100ml/3.4 fl oz tube

AGEING SKINS

The pinnacle of age fighting treatments. This mask forms a part of the Esse PLUS professional line.

K<sup>12</sup>

### Omega Mask

100ml/3.4 fl oz tube

ALL SKINS

An optimal blend of probiotics, actives, and omegas 3, 6 & 9 in a bio-available omega skin supplement.

K<sup>10</sup>

### Gel Mask

200ml/6.8fl oz salon tube

OILY SKINS

Normalises seborrheic skin and brightens the complexion. Minimises the appearance of comedones.

K<sup>14</sup>

### Exclusion Mask

500g/17.6 oz resealable doy pack

ALL SKINS

A soothing, calming mask that sets on the skin to create an environment to exclude oxygen to facilitate the microbial growth.

## PROFESSIONAL AMPOULES

R<sup>13</sup>

### Probiotic Ampoule

ALL SKINS

A powerful unique 2-part professional product that adds billions of live probiotics to rewild the skin.

0.3g/0.1 oz vial and 2ml/0.06 fl oz vial

A<sup>1</sup>

### Clarifying Ampoule

OILY SKINS

A combination of actives that work synergistically to reduce excess sebum, treat breakouts, and decrease redness and inflammation associated with acne.

1ml/0.034 fl oz syringe

A<sup>2</sup>

### Hydroboost Ampoule

ALL SKINS

An ideal between-season quick moisture boost for all skins; hydrates, moisturises, soothes and rebalances skin using Myrothamnus extract and probiotics.

1ml/0.034 fl oz syringe

A<sup>3</sup>

### Bright Ampoule

ALL SKINS

A skin brightening booster - professional strength actives target uneven pigmentation by regulating key contributing factors associated with the condition.

1ml/0.034 fl oz syringe

A<sup>4</sup>

### Hyaluronic Ampoule

ALL SKINS

A soothing and calming active packed with low molecular weight hyaluronic acid, to deeply hydrate and plump fine lines.

1ml/0.034 fl oz syringe

A<sup>5</sup>

### Intensity Ampoule

AGEING SKINS

Intense muscle relaxant plant extract provides strong and rapid wrinkle reduction, visibly reducing the appearance of expressions lines in just one treatment.

1ml/0.034 fl oz syringe

## PROFESSIONAL TREATMENT PRODUCTS

R<sup>7</sup>

### Repair Oil

ALL SKINS / EXTRA NIGHT CARE / SCAR TISSUE REPAIR

An intensely nourishing oil that supplies an ideal blend of omega fatty acids and vitamin E.

50ml/1.7fl oz salon dropper

R<sup>3</sup>

### Protect Oil

ALL SENSITIVE SKINS

Shields sensitive skin, offering it all round protection from environmental stresses.

50ml/1.7 fl oz salon dropper

R<sup>6</sup>

### Hyaluronic Serum

ALL SKINS / SIGNS OF AGEING

Hyaluronic Acid promotes rapid moisturisation and prebiotics help to optimise the skin's microbiome.

50ml/1.7fl oz salon pump

R<sup>5</sup>

### Eye & Lip Cream

ALL SKINS / SIGNS OF AGEING

A treatment packed with actives to hydrate and smooth delicate skin.

50ml/1.7fl oz salon pump

## PROFESSIONAL BODY PRODUCTS

**B<sup>8</sup>**

### Rich Body Moisturiser

400ml/13.5fl oz salon pump

ALL SKINS / DRY WEATHER CONDITIONS

An ideal treatment for dry or dehydrated skin.

**E<sup>15</sup>**

### Body Exfoliator

200ml/6.8fl oz

ALL SKINS

A stimulating granular exfoliator that smooths, invigorates, and kick starts circulation..

**K<sup>16</sup>**

### Detox Body Mask

200ml/6.8fl oz

ALL SKINS

A powerful creamy textured mask that detoxifies without drying the skin.

**F<sup>16</sup>**

### Body Massage Cream

200ml/6.8fl oz

ALL SKINS

Superior slip in a massage medium that allows for hydration and nourishment of the skin.

**E<sup>15</sup>**

### Hand & Foot Exfoliator

200ml/6.8fl oz

ALL SKINS

Refreshes and softens dry, rough skin on the hands and feet.

**K<sup>15</sup>**

### Hand & Foot Mask

200ml/6.8fl oz

ALL SKINS

A refreshing, minty, mask that detoxifies and revitalises tired hands and feet.

**B<sup>10</sup>**

### Body Butter

200ml/6.8fl oz

ALL SKINS

Ultra-nourishing with unique plant extracts and probiotics to protect dry or irritated skin.



# IN THE FUTURE WE'LL ALL LOOK AFTER THE MICROBES ON OUR SKIN.

We'll understand that they are our symbiotic allies and that they protect our skin from pathogens and toxins. We'll stop using anti-bacterial products that kill both good and bad microbes. We will choose products without synthetic ingredients and harsh preservatives that pollute and destabilise our skin microbiome. We'll feed our microbes and use treatments that seed our skin with beneficial probiotic species to help ease sensitivity and slow the rate of ageing.

The future is pro-biotic not anti-biotic... and that future starts now.

[www.esseskincare.com](http://www.esseskincare.com)